

GOING FUTURE TODAY.



Optical Interconnection Point

innovative and reliable

optional optical RF Receiver

OFN46-WDx-ALC



APL46



APL46 and OFN46-WDx-ALC:

- Plastic lid housing for fibre termination and fibre tray of up to 4 splices; mounting of up to two LC Simplex or Duplex or SC Simplex couplers possible

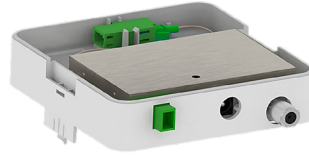
OFN46-WDx-ALC:

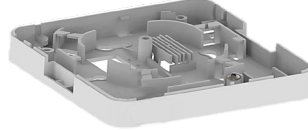
- incl. CATV RF receiver up to 1.218 MHz with transparent GPON / XG-PON / XGS-PON / NG-PON / loop through port for connection of data / telephony end devices
- AGC range for CATV -8 dBm ... +2 dBm, maximum range -12 dBm .. +2 dBm
- CATV range (pass: 1550 ..1560 nm); RF frequency range 45 - 1218 MHz
- three colour LED for easy status control
- AC adapter plug-in power supply +12 VDC, very low power consumption ≤ 2 W

APL46:

- optical RF receiver OR46-WDx-ALC retrofittable

Lid


 Optical RF receiver
 OR46-WDx-ALC
 (RF output and GPON Port)

 optional
 Order number 212 248

 Optical interconnection point
 (up to 4 optical outputs
 mountable)


Type		OFN46-WDx-ALC
Housing		compact
Connector type		COM Pigtail LC/APC, PON Coupler LC/APC
Optical parameters		
CATV operating wavelength (WDM pass channel)	[nm]	1550...1560
PON Port operating wavelength: GPON / XG-PON / XGS-PON / NG-PON/measurement (WDM reflective channel)	[nm]	1260 .. 1330 / 1480 ..1500 / 1575..1581 / 1524..1544 / 1596..1660
Isolation CATV (pass channel) to 1310 nm to 1490 nm to 1577 nm	[dB]	35 35 30
Optical input power	[dBm]	-12...+2
Nominal optical input power (AGC range)	[dBm]	-8...+2
Multicolor LED		Orange (no input): < -15.0 dBm Orange (low input): -15.0 dBm .. -8.0 dBm Green (normal): -8.0 dBm .. +2.0 dBm Red (high): > +2.0 dBm
Isolation PON Port to 1550 nm	[dB]	18
Insertion loss CATV Port on filter	[dB]	< 1.0
Insertion loss PON Port on filter	[dB]	< 1.0
Optical return loss	[dB]	> 40
Fibre type		Single Mode Fibre 9/125
RF parameters		
Frequency range	[MHz]	45 ... 1218
Flatness	[dB]	±0,75
RF level (OMI 3,5 %)*	[dBμV]	≥ 76 (@ Pin -8.0 dBm..+2.0 dBm within AGC)
RF port return loss	[dB]	≥ 18
Output impedance	[Ω]	75
RF connector type		F-jack
Common data		
Power supply unit	[VDC]	Primary: 100 .. 240 VAC - 50/60 Hz - 0,5 A Secondary: +12,0 VDC / 0,5 A Max. operating temperature: 55 °C
Power consumption	[W]	≤ 2
Housing type		Plastic wall mount housing, with or without plug in RF optical receiver
Dimensions inner FTTH receiver (L x W x H)	[mm]	80 x 50 x 22
Dimensions plastic tray with locking screw (L x W x H)	[mm]	95 x 95 x 37
Ambient temperature	[°C]	-10...+55
Relative humidity	[%]	maximum 95, not condensing